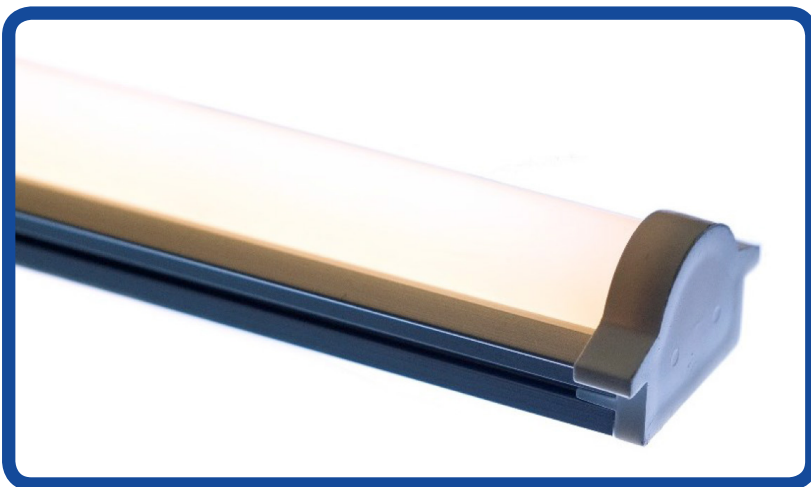




## CVARCH-3000-927

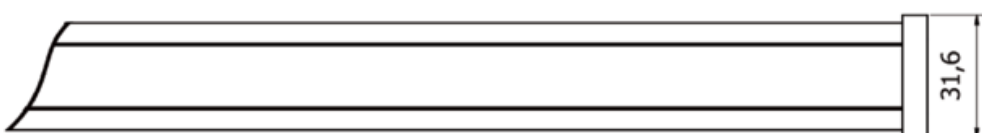
Lumen Output:	3000 lumens per metre
Watt Output:	30 watts per metre
Colour Temperature:	2700k
CRI:	90
IP Rating:	20
Bar Length:	116mm minimum 1220mm maximum Custom lengths available on request
Driver Detail:	Constant Voltage dimmable DALI, 0-10, 230V and DMX options
Voltage:	24V



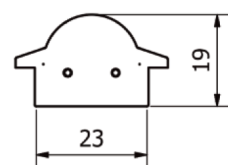
Linear remote phosphor lighting engine with a lumen maintenance at L70 of 100,000 hours. Uniform constant light output and colour temperatures with 3 standard macadam steps. High efficiency >100 lumens per watt. Unit supplied with multi use bracket giving the options of adjustable or fixed mount either horizontally or vertically.

### Technical Drawing:

Plan view. Specify length. See technical documentation.



End view.



# SPECTRUM TEST REPORT

Date : 2016/02/19

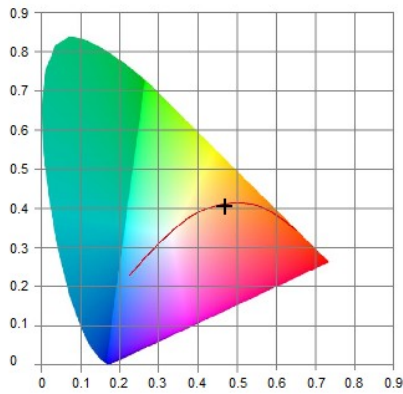
## Information

User : 8point3 Ltd	Measure Time : 16:22:07
Model NO. : MK350S	Light Source : 927
Memo :	

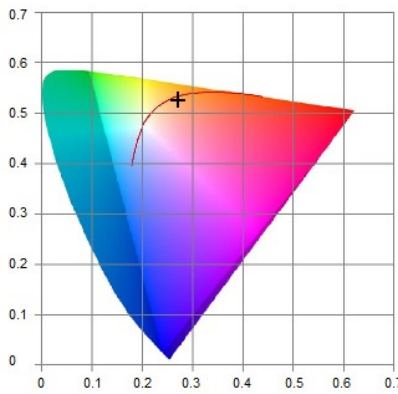
## BASIC

CCT	: 2541K
x	: 0.4685
y	: 0.4051
$\lambda_D$	: 586nm
$\lambda_P$	: 639nm

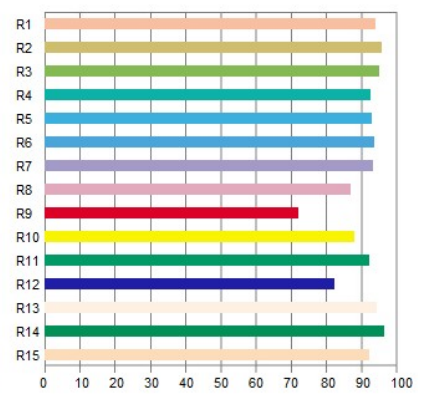
## CIE1931



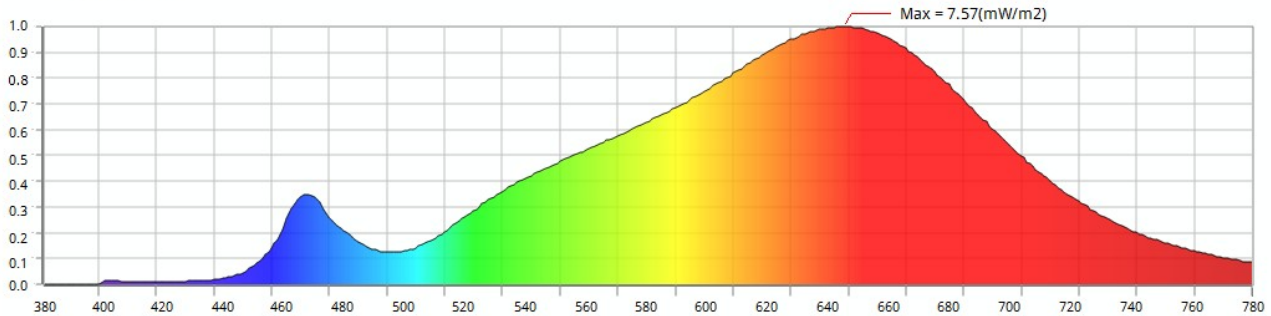
## CIE1976



## CRI



## Spectrum



## Features

CCT : 2541K	x : 0.4685	$\Delta x$ : -0.0049	$f_c$ : 30.1	PPF-R : 3.50	R1 : 93.7	R6 : 93.5	R11 : 91.9
LUX : 324	y : 0.4051	$\Delta y$ : -0.0080	$\lambda_D$ : 586	PPF-G : 1.86	R2 : 95.5	R7 : 93.2	R12 : 82.0
CRI : 92.8	$u'$ : 0.2706	$\Delta u$ : 0.0006	$\lambda_P$ : 639	PPF-B : 0.3993	R3 : 94.6	R8 : 86.8	R13 : 94.1
I-Time : 933	$v'$ : 0.5266	$\Delta v$ : -0.0038	$\lambda_{PV}$ : 7.57	PPF-UV : 0.0059	R4 : 92.4	R9 : 71.9	R14 : 96.2
Flicker : N/A	Duv : -0.0026	Purity : 0.6218	PPF : 5.76	PPF-NIR : 0.8466	R5 : 92.6	R10 : 87.9	R15 : 92.1
SP-ratio : 1.18	CQS : 87.5	X : 374	Y : 324	Z : 101.0	TLCI : 88.0	GAI : 49.5	

**UPRtek**  
United Power Research Technology Corporation

