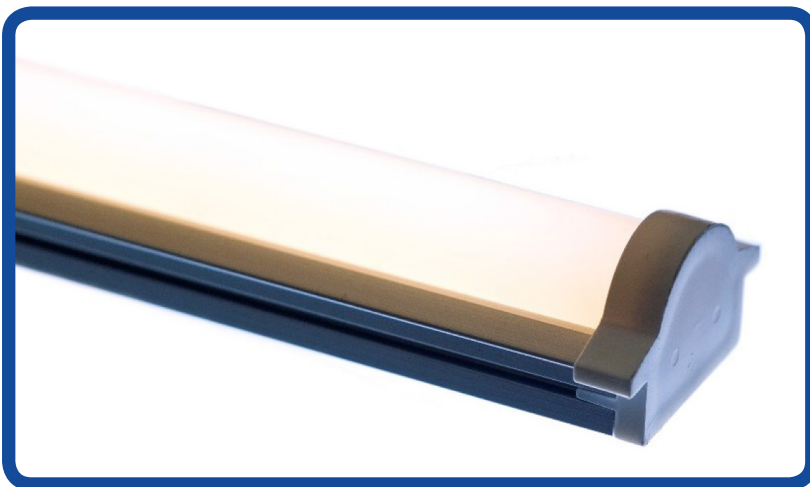


## CVARCH-1000-850

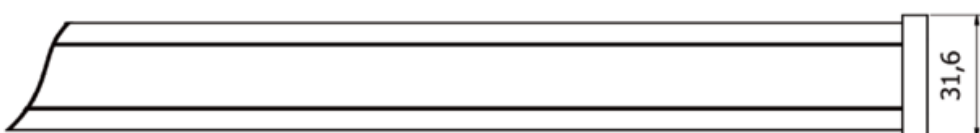
Lumen Output:	1000 lumens per metre
Watt Output:	10 watts per metre
Colour Temperature:	5000k
CRI:	80
IP Rating:	20
Bar Length:	116mm minimum 1220mm maximum Custom lengths available on request
Driver Detail:	Constant Voltage dimmable DALI, 0-10, 230V and DMX options
Voltage:	24V



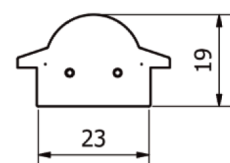
Linear remote phosphor lighting engine with a lumen maintenance at L70 of 100,000 hours. Uniform constant light output and colour temperatures with 3 standard macadam steps. High efficiency >100 lumens per watt. Unit supplied with multi use bracket giving the options of adjustable or fixed mount either horizontally or vertically.

### Technical Drawing:

Plan view. Specify length. See technical documentation.



End view.



# SPECTRUM TEST REPORT

Date : 2016/02/19

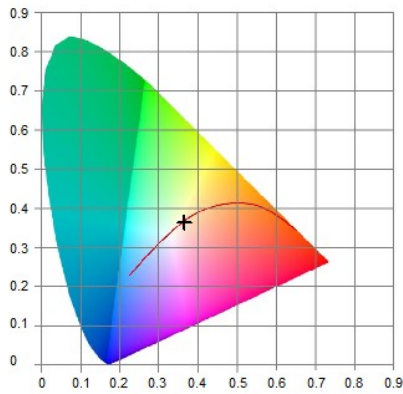
## Information

User : 8point3 Ltd  
 Measure Time : 16:24:49  
 Model NO. : MK350S  
 Light Source : 850  
 Memo :

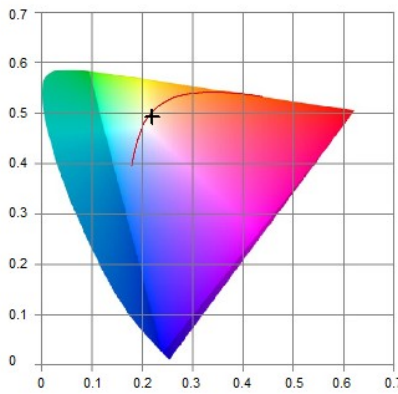
## BASIC

CCT : 4362K  
 x : 0.3651  
 y : 0.3640  
 $\lambda_D$  : 579nm  
 $\lambda_P$  : 451nm

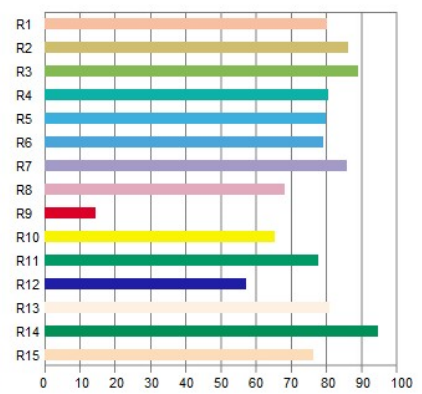
## CIE1931



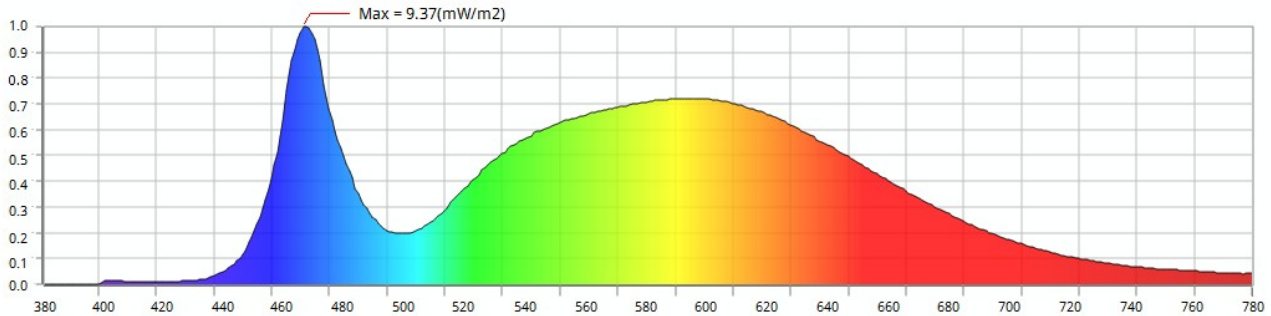
## CIE1976



## CRI



## Spectrum



## Features

CCT : 4362K	x : 0.3651	$\Delta x$ : -0.0007	$f_c$ : 38.6	PPF-R : 2.15	R1 : 80.0	R6 : 78.9	R11 : 77.4
LUX : 415	y : 0.3640	$\Delta y$ : -0.0031	$\lambda_D$ : 579	PPF-G : 2.67	R2 : 85.8	R7 : 85.7	R12 : 57.1
CRI : 80.9	$u'$ : 0.2200	$\Delta u$ : 0.0008	$\lambda_P$ : 451	PPF-B : 1.14	R3 : 88.8	R8 : 67.9	R13 : 80.8
I-Time : 933	$v'$ : 0.4935	$\Delta v$ : -0.0015	$\lambda_{PV}$ : 9.37	PPF-UV : 0.0073	R4 : 80.2	R9 : 14.3	R14 : 94.3
Flicker : N/A	Duv : -0.0013	Purity : 0.1876	PPF : 5.96	PPF-NIR : 0.3549	R5 : 79.7	R10 : 65.2	R15 : 76.2
SP-ratio : 1.74	CQS : 80.3	X : 417	Y : 415	Z : 309	TLCI : 68.9	GAI : 79.8	

**UPRtek**  
 United Power Research Technology Corporation

