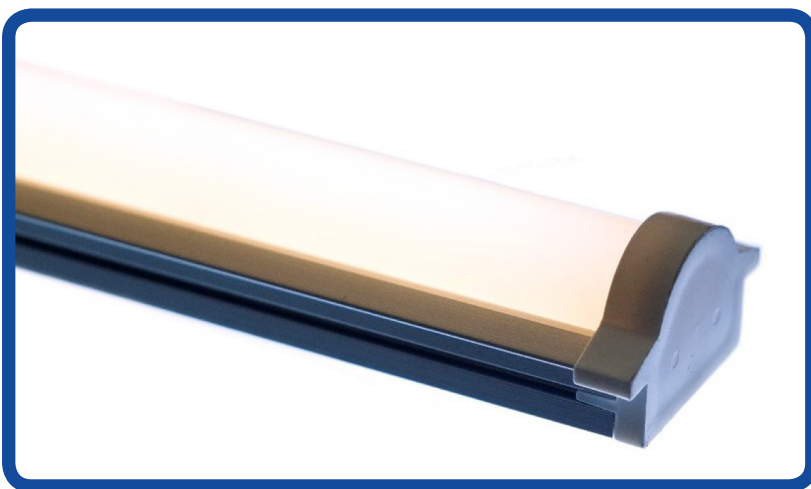


CVARCH-2000-840

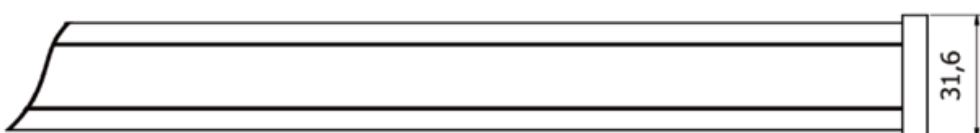
Lumen Output:	2000 lumens per metre
Watt Output:	19 watts per metre
Colour Temperature:	4000k
CRI:	80
IP Rating:	20
Bar Length:	116mm minimum 1220mm maximum Custom lengths available on request
Driver Detail:	Constant Voltage dimmable DALI, 0-10, 230V and DMX options
Voltage:	24V



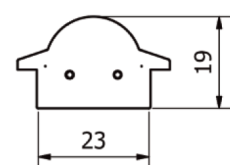
Linear remote phosphor lighting engine with a lumen maintenance at L70 of 100,000 hours. Uniform constant light output and colour temperatures with 3 standard macadam steps. High efficiency >100 lumens per watt. Unit supplied with multi use bracket giving the options of adjustable or fixed mount either horizontally or vertically.

Technical Drawing:

Plan view. Specify length. See technical documentation.



End view.



SPECTRUM TEST REPORT

Date : 2016/02/19

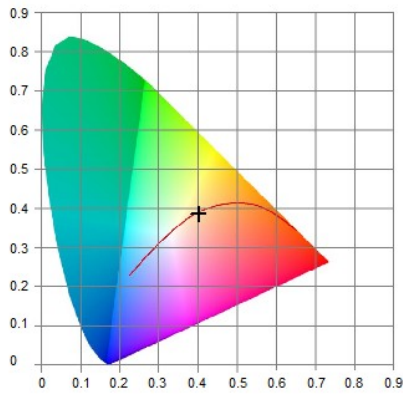
Information

User : 8point3 Ltd
 Measure Time : 16:23:54
 Model NO. : MK350S
 Light Source : 840
 Memo :

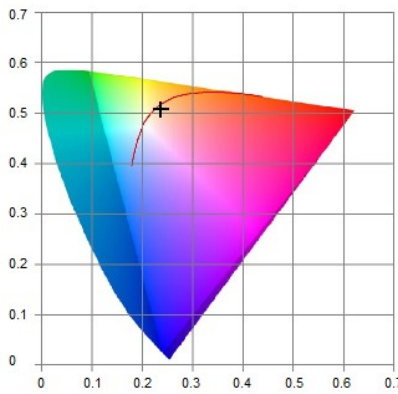
BASIC

CCT : 3519K
 x : 0.4021
 y : 0.3845
 λ_D : 582nm
 λ_P : 598nm

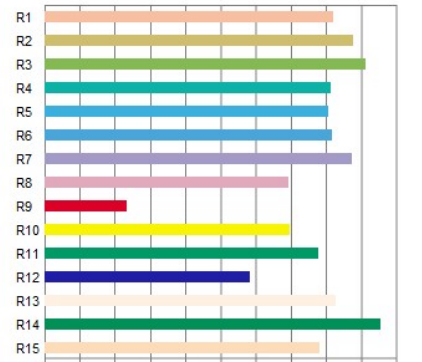
CIE1931



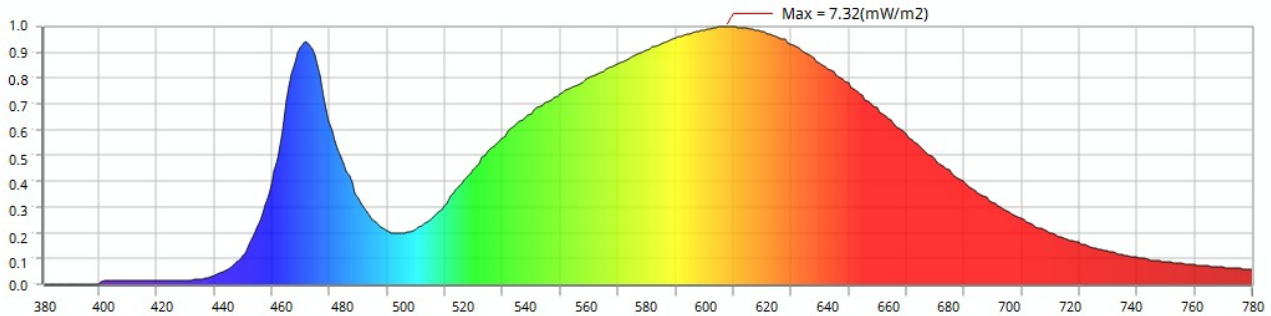
CIE1976



CRI



Spectrum



Features

CCT : 3519K	x : 0.4021	Δx : -0.0021	f_c : 38.6	PPF-R : 2.60	R1 : 81.6	R6 : 81.3	R11 : 77.7
LUX : 415	y : 0.3845	Δy : -0.0057	λ_D : 582	PPF-G : 2.60	R2 : 87.5	R7 : 86.9	R12 : 58.2
CRI : 82.3	u' : 0.2362	Δu : 0.0010	λ_P : 598	PPF-B : 0.8563	R3 : 91.0	R8 : 69.0	R13 : 82.5
I-Time : 933	v' : 0.5082	Δv : -0.0027	λ_{PV} : 7.32	PPF-UV : 0.0070	R4 : 81.0	R9 : 23.2	R14 : 95.1
Flicker : N/A	Duv : -0.0021	Purity : 0.3603	PPF : 6.05	PPF-NIR : 0.4306	R5 : 80.4	R10 : 69.4	R15 : 77.8
SP-ratio : 1.49	CQS : 81.4	X : 434	Y : 415	Z : 230	TLCI : 70.2	GAI : 69.3	

UPRtek
 United Power Research Technology Corporation

