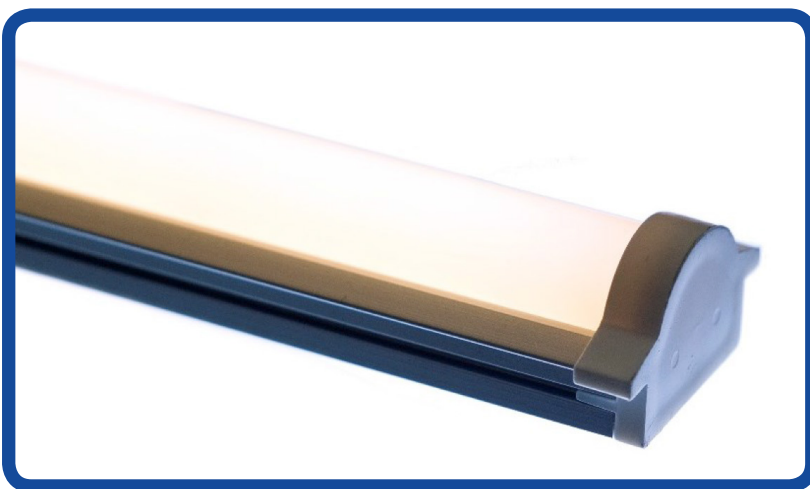


CVARCH-2000-927

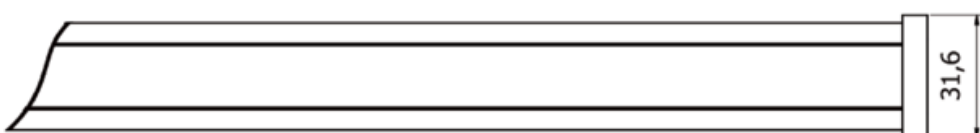
Lumen Output:	2000 lumens per metre
Watt Output:	19 watts per metre
Colour Temperature:	2700k
CRI:	90
IP Rating:	20
Bar Length:	116mm minimum 1220mm maximum Custom lengths available on request
Driver Detail:	Constant Voltage dimmable DALI, 0-10, 230V and DMX options
Voltage:	24V



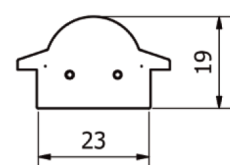
Linear remote phosphor lighting engine with a lumen maintenance at L70 of 100,000 hours. Uniform constant light output and colour temperatures with 3 standard macadam steps. High efficiency >100 lumens per watt. Unit supplied with multi use bracket giving the options of adjustable or fixed mount either horizontally or vertically.

Technical Drawing:

Plan view. Specify length. See technical documentation.



End view.



SPECTRUM TEST REPORT

Date : 2016/02/19

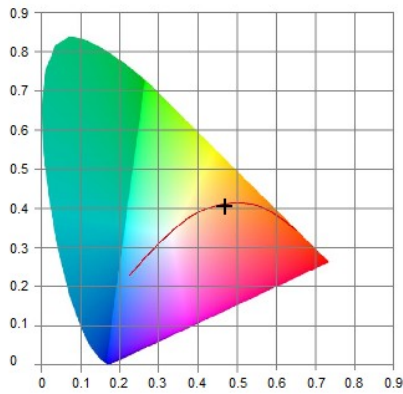
Information

User : 8point3 Ltd	Measure Time : 16:22:07
Model NO. : MK350S	Light Source : 927
Memo :	

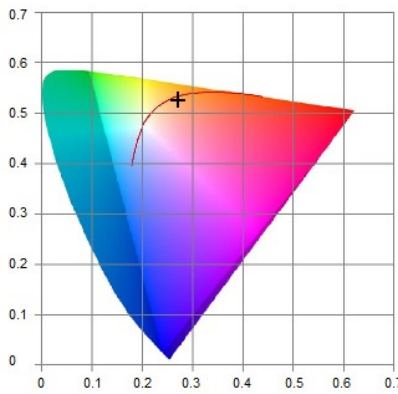
BASIC

CCT	: 2541K
x	: 0.4685
y	: 0.4051
λ_D	: 586nm
λ_P	: 639nm

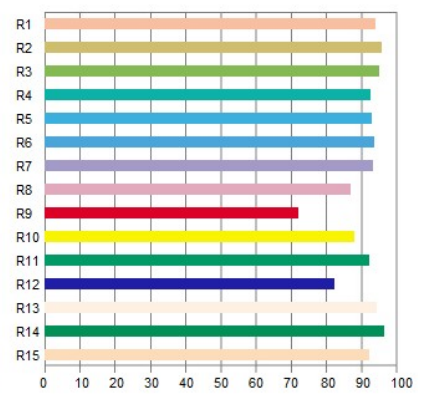
CIE1931



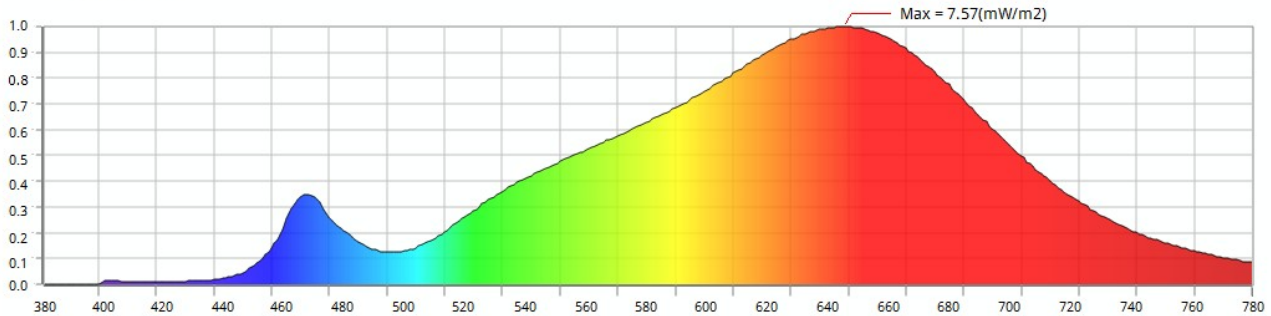
CIE1976



CRI



Spectrum



Features

CCT : 2541K	x : 0.4685	Δx : -0.0049	f_c : 30.1	PPF-R : 3.50	R1 : 93.7	R6 : 93.5	R11 : 91.9
LUX : 324	y : 0.4051	Δy : -0.0080	λ_D : 586	PPF-G : 1.86	R2 : 95.5	R7 : 93.2	R12 : 82.0
CRI : 92.8	u' : 0.2706	Δu : 0.0006	λ_P : 639	PPF-B : 0.3993	R3 : 94.6	R8 : 86.8	R13 : 94.1
I-Time : 933	v' : 0.5266	Δv : -0.0038	λ_{PV} : 7.57	PPF-UV : 0.0059	R4 : 92.4	R9 : 71.9	R14 : 96.2
Flicker : N/A	Duv : -0.0026	Purity : 0.6218	PPF : 5.76	PPF-NIR : 0.8466	R5 : 92.6	R10 : 87.9	R15 : 92.1
SP-ratio : 1.18	CQS : 87.5	X : 374	Y : 324	Z : 101.0	TLCI : 88.0	GAI : 49.5	

UPRtek
United Power Research Technology Corporation

