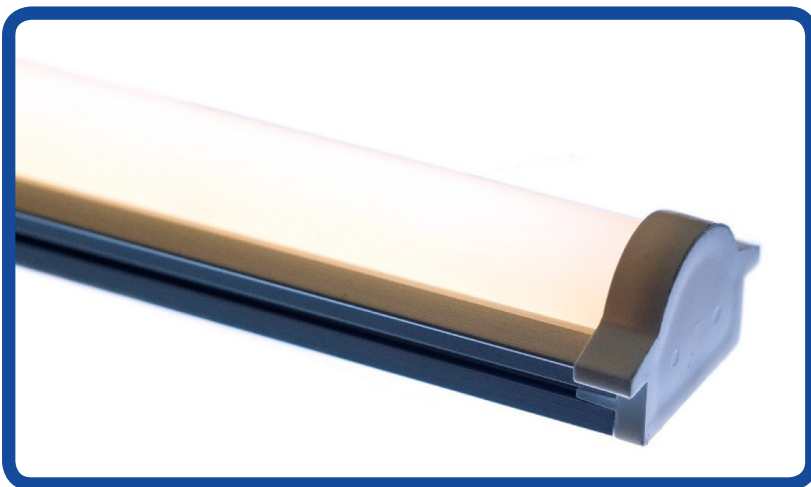




CVARCH-1000-924

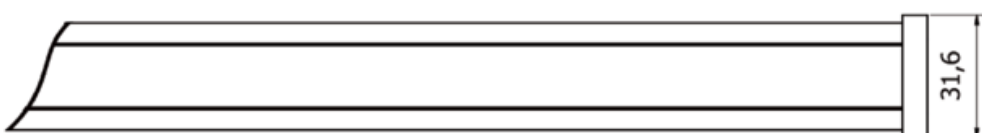
Lumen Output:	1000 lumens per metre
Watt Output:	10 watts per metre
Colour Temperature:	2400k
CRI:	90
IP Rating:	20
Bar Length:	116mm minimum 1220mm maximum Custom lengths available on request
Driver Detail:	Constant Voltage dimmable DALI, 0-10, 230V and DMX options
Voltage:	24V



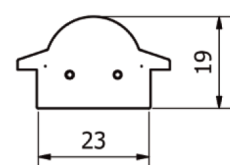
Linear remote phosphor lighting engine with a lumen maintenance at L70 of 100,000 hours. Uniform constant light output and colour temperatures with 3 standard macadam steps. High efficiency >100 lumens per watt. Unit supplied with multi use bracket giving the options of adjustable or fixed mount either horizontally or vertically.

Technical Drawing:

Plan view. Specify length. See technical documentation.



End view.



SPECTRUM TEST REPORT

Date : 2016/02/19

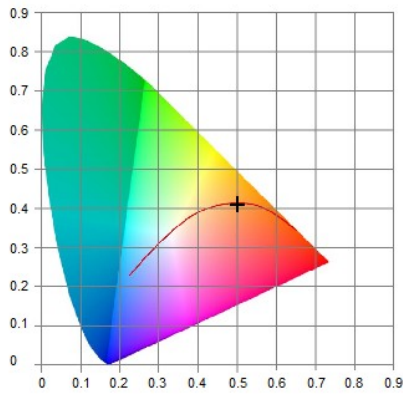
Information

User : 8point3 Ltd	Measure Time : 16:21:20
Model NO. : MK350S	Light Source : 924
Memo :	

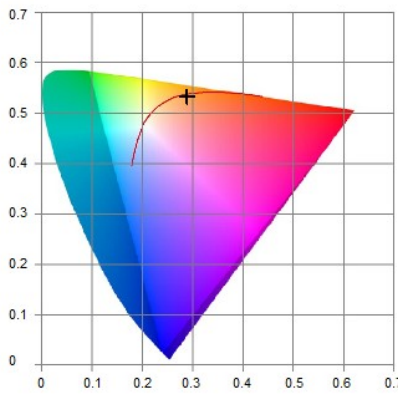
BASIC

CCT	: 2200K
x	: 0.5018
y	: 0.4097
λ_D	: 588nm
λ_P	: 641nm

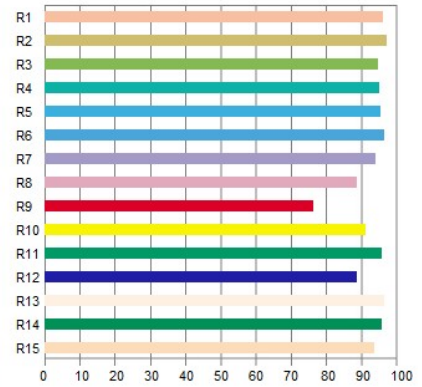
CIE1931



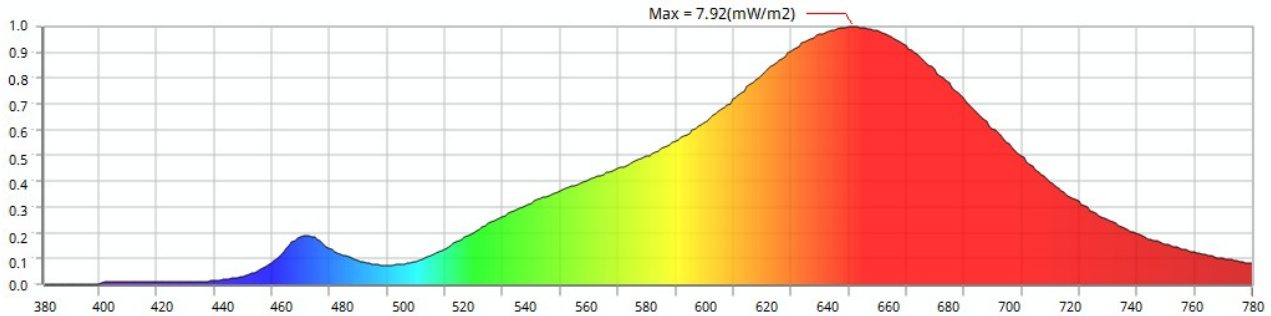
CIE1976



CRI



Spectrum



Features

CCT : 2200K	x : 0.5018	Δx : -0.0039	f_c : 26.1	PPF-R : 3.60	R1 : 96.0	R6 : 96.4	R11 : 95.4
LUX : 281	y : 0.4097	Δy : -0.0055	λ_D : 588	PPF-G : 1.53	R2 : 96.9	R7 : 93.9	R12 : 88.6
CRI : 94.5	u' : 0.2903	Δu : 0.0002	λ_P : 641	PPF-B : 0.2422	R3 : 94.6	R8 : 88.5	R13 : 96.3
I-Time : 933	v' : 0.5334	Δv : -0.0026	λ_{PV} : 7.92	PPF-UV : 0.0052	R4 : 94.9	R9 : 76.1	R14 : 95.6
Flicker : N/A	Duv : -0.0018	Purity : 0.7344	PPF : 5.38	PPF-NIR : 0.8704	R5 : 95.1	R10 : 90.7	R15 : 93.5
SP-ratio : 1.01	CQS : 83.9	X : 344	Y : 281	Z : 60.6	TLCI : 84.7	GAI : 36.9	

UPRtek
United Power Research Technology Corporation

