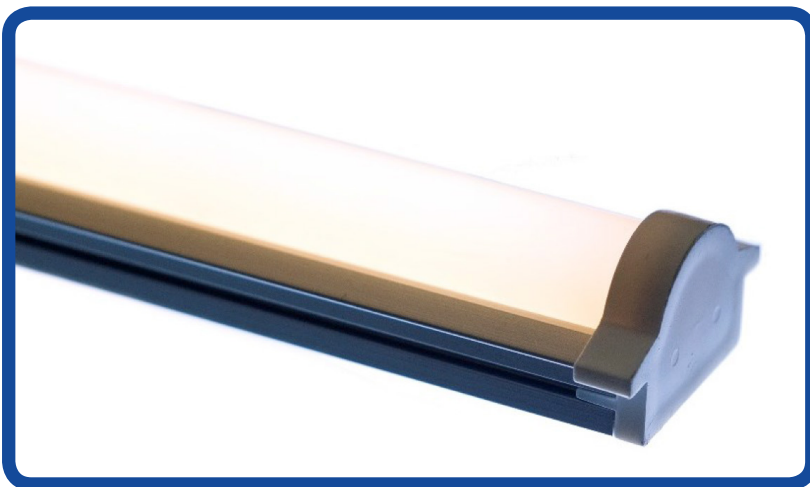


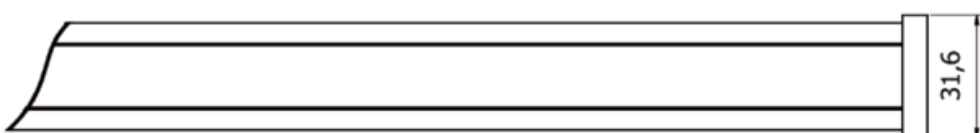
Lumen Output:	3000 lumens per metre
Watt Output:	30 watts per metre
Colour Temperature:	3000k
CRI:	90
IP Rating:	20
Bar Length:	116mm minimum 1220mm maximum Custom lengths available on request
Driver Detail:	Constant Voltage dimmable DALI, 0-10, 230V and DMX options
Voltage:	24V



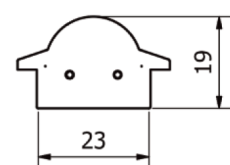
Linear remote phosphor lighting engine with a lumen maintenance at L70 of 100,000 hours. Uniform constant light output and colour temperatures with 3 standard macadam steps. High efficiency >100 lumens per watt. Unit supplied with multi use bracket giving the options of adjustable or fixed mount either horizontally or vertically.

### Technical Drawing:

Plan view. Specify length. See technical documentation.



End view.



# SPECTRUM TEST REPORT

Date : 2016/02/19

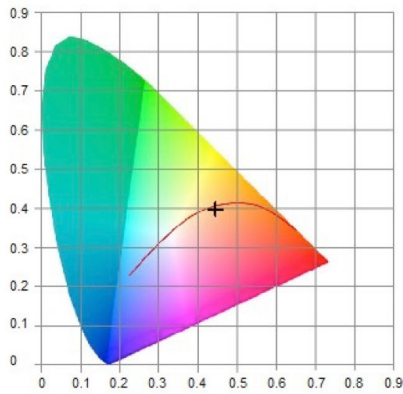
## Information

User : 8point3 Ltd	Measure Time : 16:32:52
Model NO. : MK350S	Light Source : 930
Memo :	

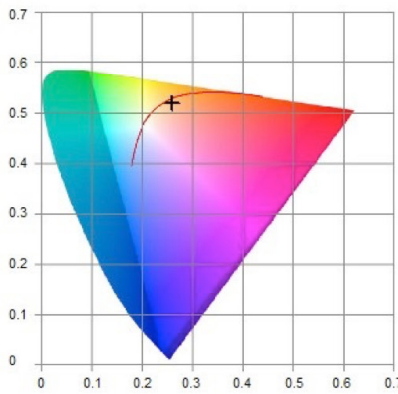
## BASIC

CCT	: 2811K
x	: 0.4449
y	: 0.3969
$\lambda_D$	: 585nm
$\lambda_P$	: 634nm

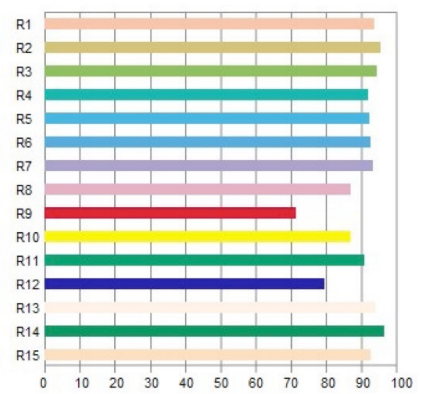
## CIE1931



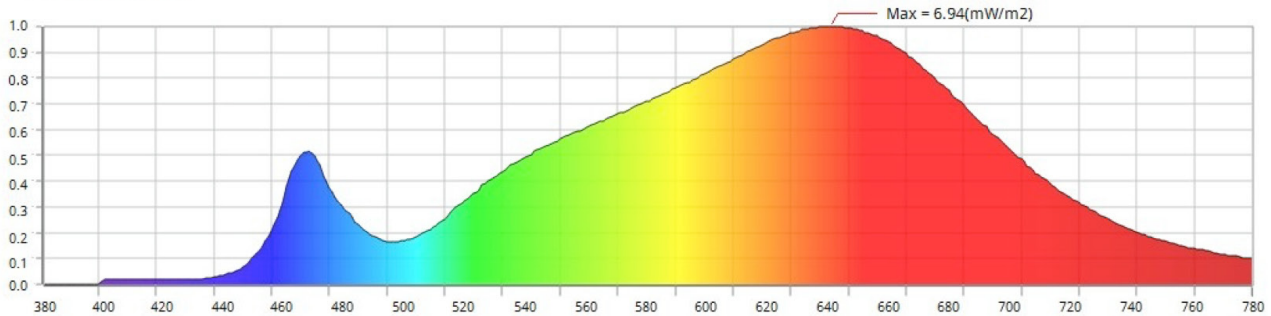
## CIE1976



## CRI



## Spectrum



## Features

CCT : 2811K	x : 0.4449	$\Delta x$ : -0.0061	$f_c$ : 30.8	PPF-R : 3.21	R1 : 93.3	R6 : 92.3	R11 : 90.6
LUX : 331	y : 0.3969	$\Delta y$ : -0.0115	$\lambda_D$ : 585	PPF-G : 1.95	R2 : 95.1	R7 : 92.9	R12 : 79.1
CRI : 92.2	$u'$ : 0.2589	$\Delta u$ : 0.0011	$\lambda_P$ : 634	PPF-B : 0.5171	R3 : 94.1	R8 : 86.7	R13 : 93.7
I-Time : 933	$v'$ : 0.5197	$\Delta v$ : -0.0054	$\lambda_{PV}$ : 6.94	PPF-UV : 0.0088	R4 : 91.5	R9 : 71.2	R14 : 96.1
Flicker : N/A	Duv : -0.0038	Purity : 0.5268	PPF : 5.67	PPF-NIR : 0.7842	R5 : 92.1	R10 : 86.7	R15 : 92.2
SP-ratio : 1.31	CQS : 87.9	X : 371	Y : 331	Z : 132	TLCI : 88.7	GAI : 59.5	

**UPRtek**  
United Power Research Technology Corporation

