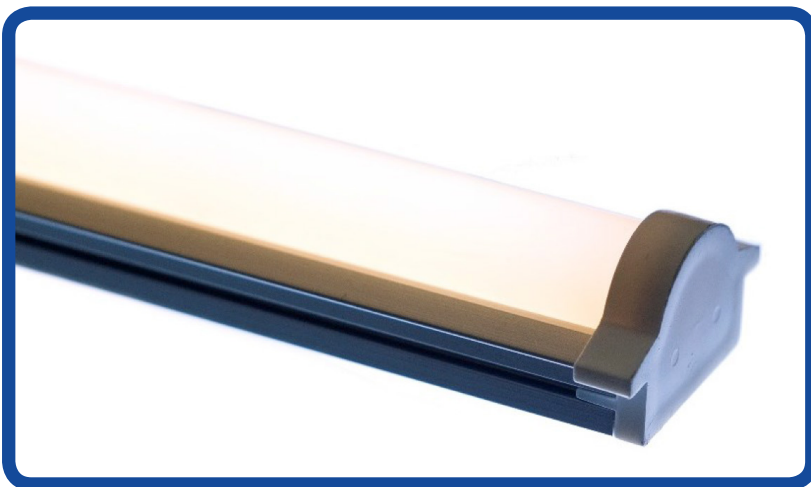


CVARCH-1000-927

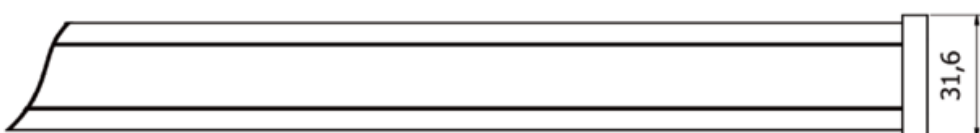
| | |
|---------------------|--|
| Lumen Output: | 1000 lumens per metre |
| Watt Output: | 10 watts per metre |
| Colour Temperature: | 2700k |
| CRI: | 90 |
| IP Rating: | 20 |
| Bar Length: | 116mm minimum 1220mm maximum Custom lengths available on request |
| Driver Detail: | Constant Voltage dimmable DALI, 0-10, 230V and DMX options |
| Voltage: | 24V |



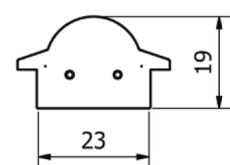
Linear remote phosphor lighting engine with a lumen maintenance at L70 of 100,000 hours. Uniform constant light output and colour temperatures with 3 standard macadam steps. High efficiency >100 lumens per watt. Unit supplied with multi use bracket giving the options of adjustable or fixed mount either horizontally or vertically.

Technical Drawing:

Plan view. Specify length. See technical documentation.



End view.



SPECTRUM TEST REPORT

Date : 2016/02/19

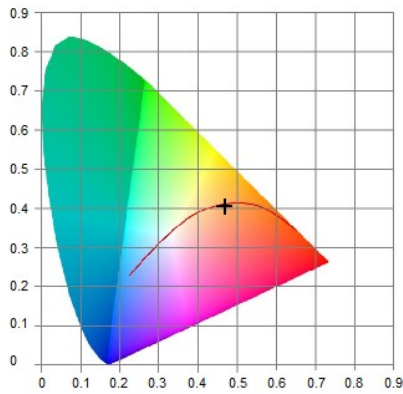
Information

| | |
|--------------------|-------------------------|
| User : 8point3 Ltd | Measure Time : 16:22:07 |
| Model NO. : MK350S | Light Source : 927 |
| Memo : | |

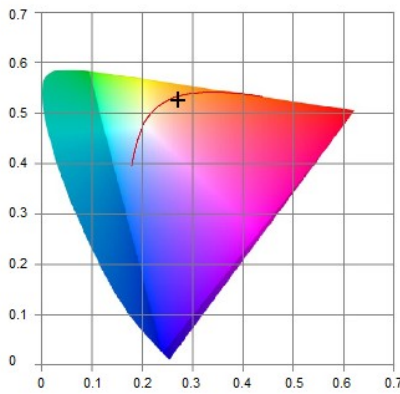
BASIC

| | |
|-------------|----------|
| CCT | : 2541K |
| x | : 0.4685 |
| y | : 0.4051 |
| λ_D | : 586nm |
| λ_P | : 639nm |

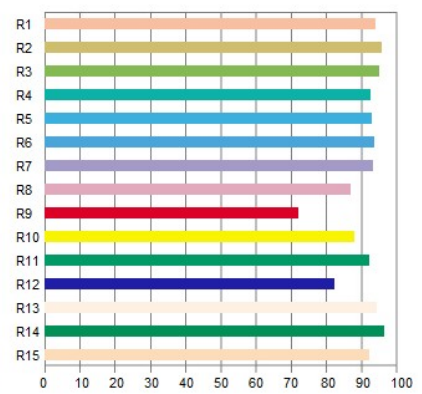
CIE1931



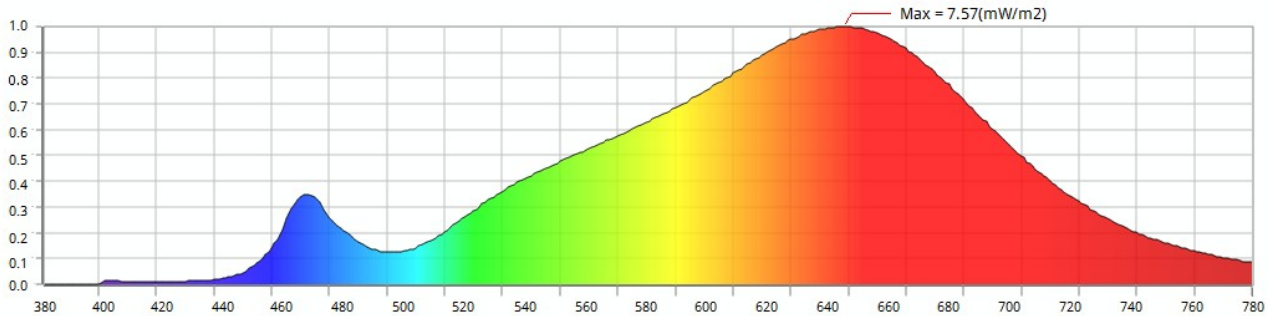
CIE1976



CRI



Spectrum



Features

| | | | | | | | |
|-----------------|---------------|----------------------|-----------------------|------------------|-------------|------------|------------|
| CCT : 2541K | x : 0.4685 | Δx : -0.0049 | f_c : 30.1 | PPF-R : 3.50 | R1 : 93.7 | R6 : 93.5 | R11 : 91.9 |
| LUX : 324 | y : 0.4051 | Δy : -0.0080 | λ_D : 586 | PPF-G : 1.86 | R2 : 95.5 | R7 : 93.2 | R12 : 82.0 |
| CRI : 92.8 | u' : 0.2706 | Δu : 0.0006 | λ_P : 639 | PPF-B : 0.3993 | R3 : 94.6 | R8 : 86.8 | R13 : 94.1 |
| I-Time : 933 | v' : 0.5266 | Δv : -0.0038 | λ_{PV} : 7.57 | PPF-UV : 0.0059 | R4 : 92.4 | R9 : 71.9 | R14 : 96.2 |
| Flicker : N/A | Duv : -0.0026 | Purity : 0.6218 | PPF : 5.76 | PPF-NIR : 0.8466 | R5 : 92.6 | R10 : 87.9 | R15 : 92.1 |
| SP-ratio : 1.18 | CQS : 87.5 | X : 374 | Y : 324 | Z : 101.0 | TLCI : 88.0 | GAI : 49.5 | |

UPRtek
United Power Research Technology Corporation

